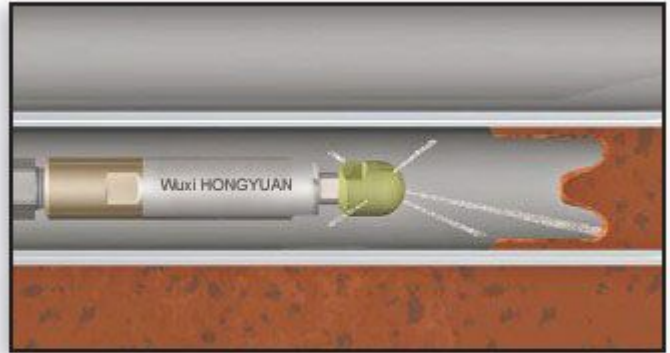


40k psi Rotary Nozzle

Now with 40k psi Power!

The **WHY BN18-40k-L6** offers greater cleaning ability due to its 40k psi rating. We offer both Polishing and Unplugging head options for all your tube cleaning applications. (see examples and chart below.) These heads come with replaceable **OS2** sapphire nozzle inserts.



The **BN18-40k-L6™** removes the toughest polymers and plastics.



Tool shown to exact size.

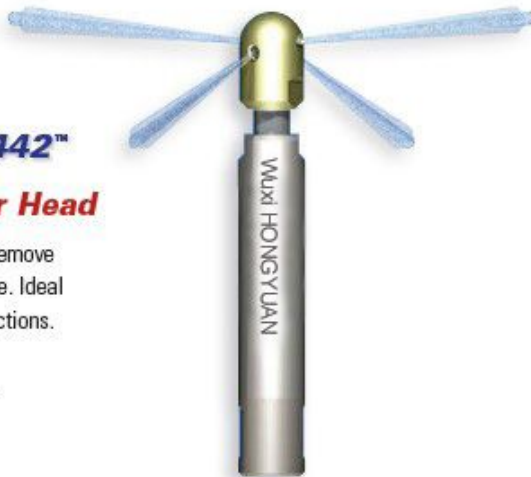
TUBE CLEANING

BN18 442™

Polisher Head

Designed to remove thin hard scale. Ideal for IRIS inspections.

- 2 jets @ 85°
- 2 jets @ 105°

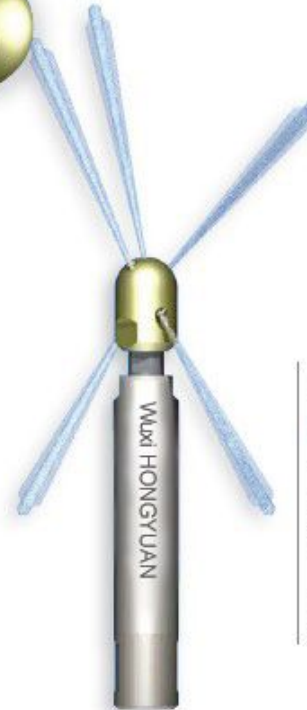


BN18 443™

Unplugging Head

This jetting option is designed for the toughest plugged tubes.

- 1 jet @ 15°, 30°, 50°
- 2 jets @ 140°



Up to 40k psi for tubes from 7/8" - 1 1/4"

BN18-40k-L6™	
Model	BN18™
For Tubes I.D.	7/8"-1-1/4" 22-38 mm
Max. Pressure	40k psi 2800 bar
Flow Rating	0.25 Cv
Inlet Port	3/8 - 24 LH HP
Body Diameter	0.69 in. 17.6 mm
Length Overall	4.7 in. 119 mm

BN18-40k-L6™ Head Options

Style	Part Number	Flow Range
Polisher	BN18™ 442-A	6.5-7 gpm 24-26 lpm
	BN18™ 442-B	6-6.5 gpm 23-24 lpm
	BN18™ 442-C	5-5.5 gpm 18-21 lpm
	BN18™ 442-D	4-4.5 gpm 15-17 lpm
Unplugging	BN18™ 443-A	6.5-7 gpm 24-26 lpm
	BN18™ 443-B	6-6.5 gpm 23-24 lpm
	BN18™ 443-C	5-5.5 gpm 18-21 lpm
	BN18™ 443-D	4-4.5 gpm 15-17 lpm