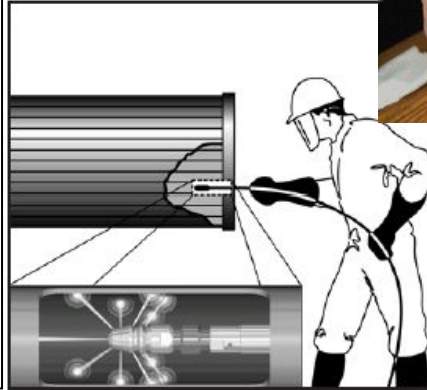


Surface cleaning nozzle&head

HPE TUBE CLEANING NOZZLES

- Designed for use with flex or rigid lances
- HPE nozzles feature right-hand threaded female Lance connections
- HPEL nozzles feature left-hand female medium pressure tube connections
- Two rows for rearward jets provide extra flushing power while special nose design allows for a greater number and optimal positioning of forward jets for unplugging
- Both series have three sizes with six patterns each and fourteen flow ratings to choose
- Custom patterns and flows available



Nozzle Specification						Patterns--Number of Jets by Location					
Model	Inlet Connection (Female)	Length		Outside Diameter		1	2	3	4	5	6
		In	mm	In	Mm						
HPE1	1/4"	1.28	32	.375	9.5	1 Front 2 Forward	1 Front 3 Forward	1 Front 3 Radial	1 Front 2 Forward	1 Front 12 Back (30°)	2 Front 3 Forward 8 Back (45°)
HPEL1		1	26			2 Radial 6 Back (45°)	8 Back (30°)	8 Back (30°)	3 Radial 6 Back (30°)		
HPE2		1.4	36	.50	12.7	1 Front 3 Forward	1 Front 4 Forward	1 Front 4 Radial	1 Front 3 Forward	1 Front 12 Back (30°)	3 Front 3 Forward 10 Back (45°)
HPEL2		1.3	33			3 Radial 8 Back (45°)	12 Back (30°)	8 Back (30°)	3 Radial 8 Back (30°)		
HPE3		1.7	43	.75	19	1 Front 4 Forward	1 Front 6 Forward	1 Front 6 Radial	1 Front 4 Forward	1 Front 16 Back (30°)	3 Front 4 Forward 8 Back (30°)
HPEL3		1.62	41.1			4 Radial 8 Back (45°)	16 Back (30°)	12 Back (30°)	6 Radial 12 Back (30°)		8 Back (30°) 8 Back (45°)

Ordering HPE Nozzle

NOZZLE SERIES — **HPE**
THREADS — **L**
 L=Left hand medium Pressure threads
 Omit for right hand

SIZE — **1 3 5**
 1=1/4" Threads
 2=3/8"Threads
 3=9/16"Threads
PATTERN — **1 3 5**
 Specify number corresponding to desired pattern from chart above
FLOWRATING — **1 3 5**
 See chart at right.

Nozzle Flow Rating

Flow Rate No	1000Psi (690Bar) L/M	14000Psi (965Bar) L/M	18000Psi (1241Bar) L/M	20000Psi (1379Bar) L/M
1	22	25	29	31
2	28	33	37	39
3	32	38	43	45
4	35	41	48	49
5	38	45	51	54
6	43	51	58	61
7	47	55	53	66
8	56	67	75	80
9	62	73	83	87