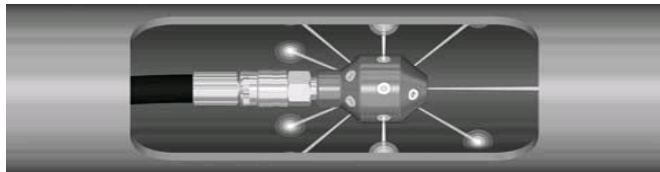
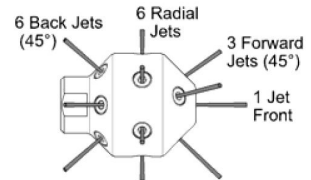
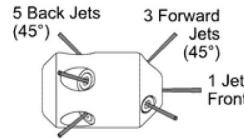


Surface cleaning nozzle&head

HY-P Series Pipe cleaning head

- Two models available
- Uses up to sixteen flush mounted AM Series tungsten carbide nozzles or AMS Series sapphire nozzles
- Flush mounted nozzle inserts provide low profile for cleaning small pipes while extensions are available for larger pipes
- Heat treated stainless steel



Part Number: HY-P1

Part Number: HY-P2

Part number	Inlet Connection	Nozzle Insert Type	Jet Configuration	Length		Diameter		Max. Operating pressure	
				In	mm	In	mm	Psi	Bar
HY-P1	20K Port Female	AM/AMS	1 Front, 3 Forward (45°), 5 Back (45°)	2.0	51	3.25	83	22000	1500
HY-P2	3/4"Female	AM/AMS	1 Front, 3 Forward (45°), 6 Radial, 6 Back (45°)	2.75	70	3.75	95	22000	1500

AM NOZZLES

- Carbide orifice
- Flow rates shown are for a single AM nozzle. Multiply by the number of nozzles to be used for total flow

AM Nozzle part Number	Orifice Size			10000Psi (690Bar)		15000Psi (1034Bar)		20000Psi (1379Bar)	
	No	In	mm	GPM	LPM	GPM	LPM	GPM	LPM
AM01	1	.018	0.46	0.8	2.9	1.0	3.6	1.1	4.2
AM02	2	.025	0.64	1.5	5.7	1.8	7.0	2.1	8.0
AM03	3	.029	0.74	2.0	7.6	2.5	9.4	2.9	10.8
AM04	4	.033	0.84	2.6	9.9	3.2	12.1	3.7	14
AM04	5	.038	0.97	3.5	13.1	4.2	16.1	4.9	18.6
AM06	6	.042	1.07	4.2	16.0	5.2	19.6	6.0	22.7
AM07	7	.046	1.17	5.1	19.2	6.2	23.5	7.2	27.2



New **HY-P-L** Model :Puts nozzles closer to the inner surface of large pipes for more effective cleaning.

Max Diameter up to 300mm !!!