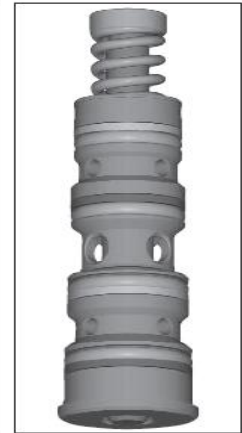
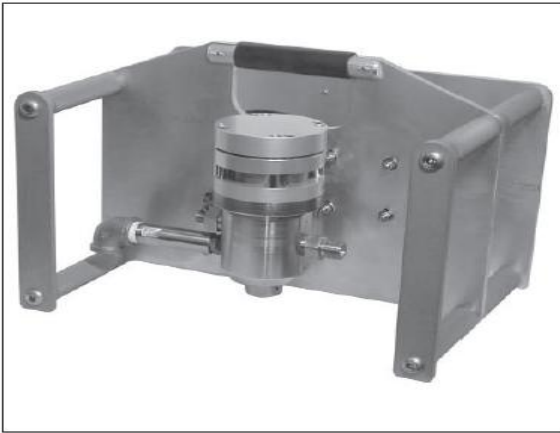


Multi-Mode Valve

-1-

I、40000Psi Multi-Mode Valve

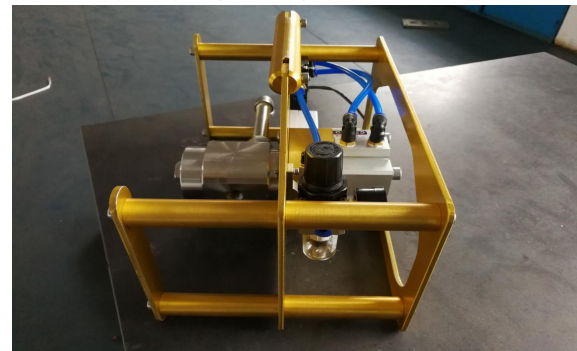
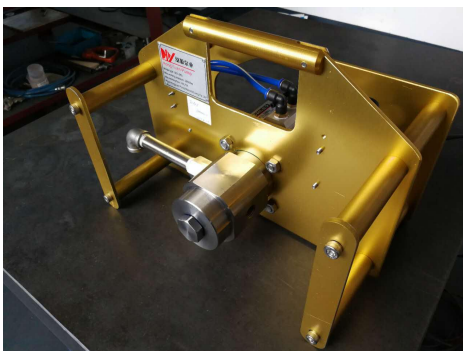


Product Description:

The MMV280 40,000 psi Multi-Mode Valve is a combination air-actuated high pressure control valve and air preparation unit. The Multi-Mode Valve controls the flow of the filtered and lubricated air and high pressure water to the gun or other appropriate device. It can be operated in FOUR different configurations (see operation options on the next page) including the use of multiple guns when configured for constant pressure or shut-off mode. This Multi-Mode utilizes a self contained dual-seat cartridge that can be easily removed in a single piece and replaced in the field. Complete overhaul and modification can be accomplished in about one minute. Rated for 40,000 psi (2,758 bar) maximum operating pressure, the control valve features connections specifically designed to resist wear and leakage common with high pressure connections. Adapters are included to connect high pressure hoses featuring the Type “M” connection. High pressure adapters are also available

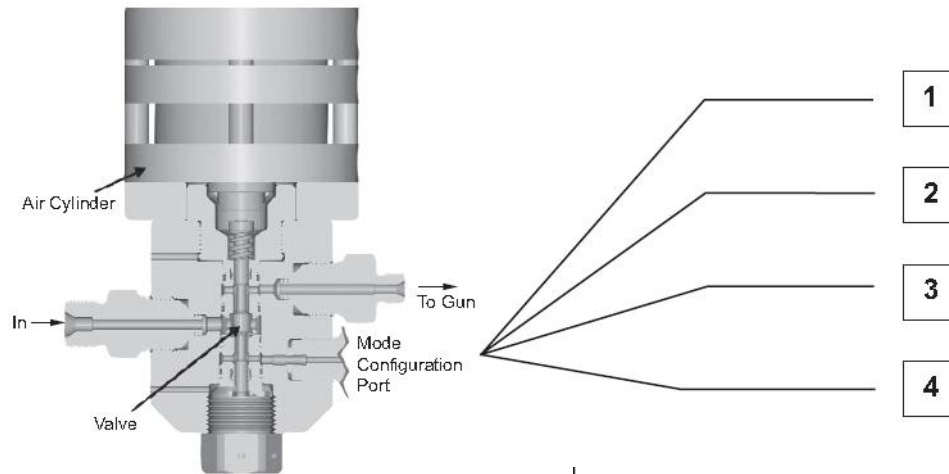
Features:

- ✧ Self contained one piece cartridge for easy removal, as opposed to multiple pieces for competitor type Systems
- ✧ Cartridge and other pressure containing components machined from hardened stainless steel and coated for longer wear life
- ✧ Cartridge is hydraulically biased, for safer operation, as opposed to a spring return system which is susceptible to corrosion, wear and failure
- ✧ Air supply pressure regulated to the custom designed actuation cylinder. This constant pressure eliminates damage to valve caused by excessive activation forces
- ✧ Regulator, filter, and oiler components protected against abuse and damage
- ✧ Ergonomically designed for ease of use and transportation
- ✧ Heavy duty, light weight aluminum frame (3/8" plate)



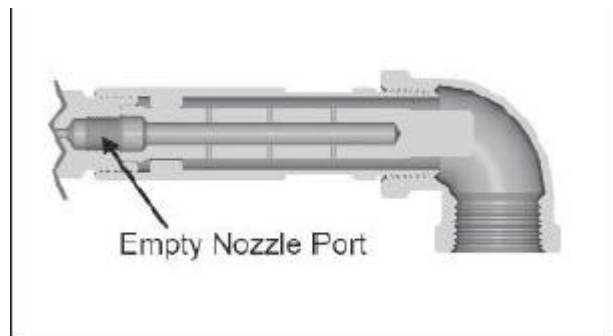
Model	Fitting	Max pressure	Max flow rate	Weight	Dimensions	Air requirement
MMV280	9/16 unf	40000Kpsi	25L/M	16kg	430-330-330mm	4.5~8.5Bar

MULTI-MODE VALVE OPERATION OPTIONS



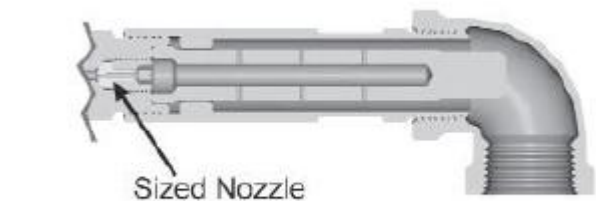
1) Dump Mode

Configured for SINGLE gun operations. When the user is not blasting, the supply water is dumped to atmospheric pressure through the Multi-Mode valve discharge port. The dumped water can be piped to a holding or recycle Tank.



2) Constant Pressure Mode

Configured for MULTIPLE gun operation. When the user is not blasting, pressure is maintained throughout the system by means of a nozzle (specifically sized for each operators' gun flow rate) that is placed in the multi model valve discharge orifice. Multiple guns can be used without significant pressure fluctuation when other guns are not Blasting.



3) Dry Shut-Off Mode

Configured for use with Intensifier type pumps and for SINGLE or MULTIPLE gun operation. A plug is placed in the discharge orifice, preventing any water from venting through the Multi-Mode Valve. Actuation of the gun almost immediately produces desired blast pressures and flow rates. CAUTION: NOT TO BE USED WITH PISTON TYPE PUMPS WITHOUT SPECIAL EQUIPMENT CONSIDERATIONS. CONSULT WUix HONGYUAN OR PUMP MANUFACTURER.



4) Custom Application Mode

The Multi-Mode Valve has the unique feature to allow it to be used as a switching valve in automation type systems. Special components are required, and Jetstream should be contacted to discuss your application.